



A R C L I G H T

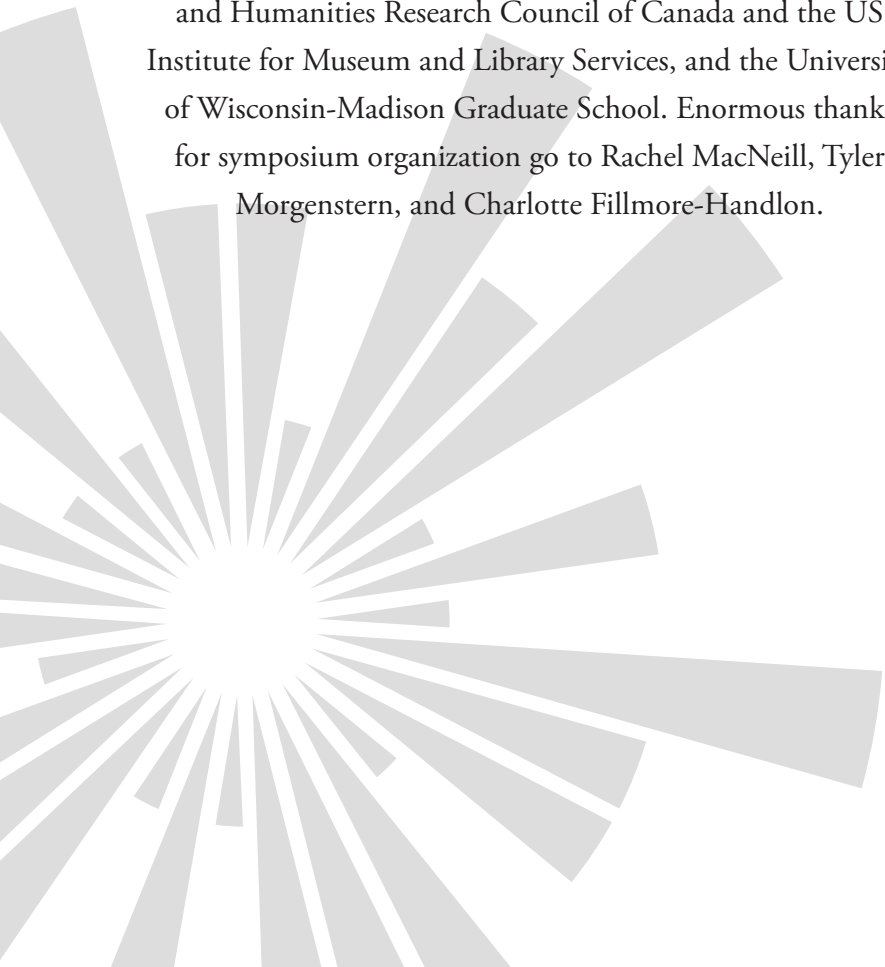
PROJECT ARCLIGHT SYMPOSIUM

MAY 13TH - 15TH, 2015

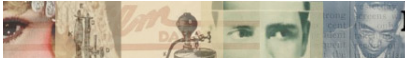
CONCORDIA UNIVERSITY

MONTREAL, QUEBEC

Arclight Symposium is part of Project Arclight, a University of Wisconsin-Madison/Concordia University (Media History Research Centre) collaboration to develop web-based tools to study the rise of 20th century American media, using the 1.4 million digitized pages of the Media History Digital Library. Funding comes from an international “Digging into Data” grant, administered through the Social Sciences and Humanities Research Council of Canada and the US Institute for Museum and Library Services, and the University of Wisconsin-Madison Graduate School. Enormous thanks for symposium organization go to Rachel MacNeill, Tyler Morgenstern, and Charlotte Fillmore-Handlon.



SPONSORS & SUPPORTERS



Media History Digital Library

MEDIA HISTORY RESEARCH CENTRE



Social Sciences and Humanities
Research Council of Canada

Conseil de recherches en
sciences humaines du Canada

Canada



A R C L I G H T

PARTICIPANTS

KEYNOTE ADDRESS: **Deb Verhoeven**, Deakin University

Charles Acland, Concordia University

Robert Allen, University of North Carolina, Chapel Hill

David Berry, University of Sussex

Jason Camlot, Concordia University

Ryan Cordell, Northeastern University

Charlotte Fillmore-Handlon, Concordia University

Kaitlin Fyfe, University of Wisconsin-Madison

Sandra Gabriele, Concordia University

Michele Hilmes, University of Wisconsin-Madison

Laura Horak, Carleton University

Eric Hoyt, University of Wisconsin-Madison

Kit Hughes, University of Wisconsin-Madison

Lea Jacobs, University of Wisconsin-Madison

Derek Long, University of Wisconsin-Madison

Fenwick McKelvey, Concordia University

Paul Moore, Ryerson University

Louis Pelletier, Université de Montréal/Concordia University

Greg Waller, Indiana University

Mark Williams, Dartmouth College

Lisa Spiro, Rice University

Tony Tran, University of Wisconsin-Madison

Haidee Wasson, Concordia University

TABLE OF CONTENTS

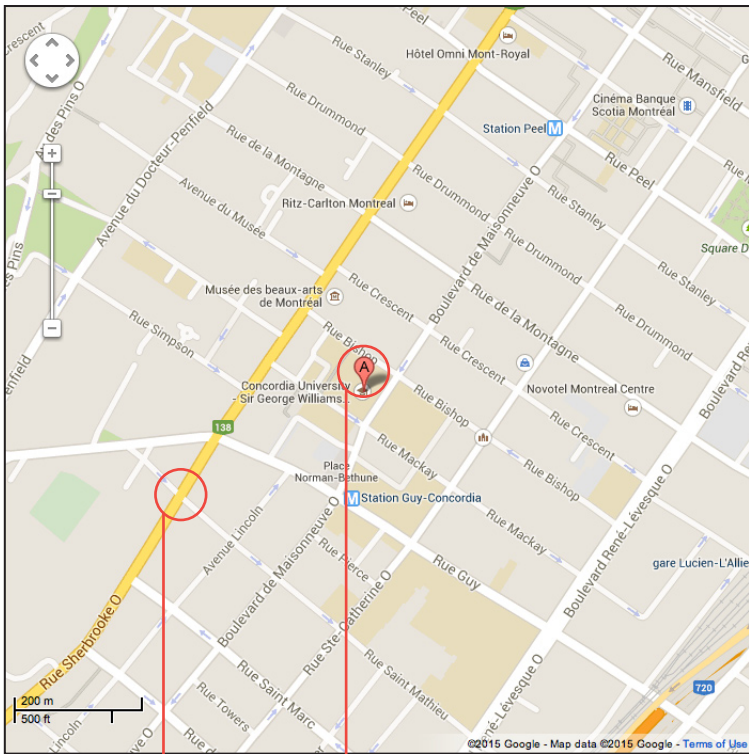
Venue Information	1
Proximity Map.....	1
Campus Map.....	2
Technical Information	3
Symposium Schedule	4
In and Around Concordia & Montreal	7
Arriving in Montreal.....	7
Getting Around Montreal.....	9
Food & Drink.....	11
Helpful Services.....	14
Notes	15

VENUE INFORMATION

Proceedings will take place in rooms H765 & H763 (adjoining)
Hall Building (7th floor), Concordia University
1455 Boulevard de Maisonneuve Ouest

Conference hotel: Hotel Chateau Versailles
1659 Rue Sherbrooke Ouest

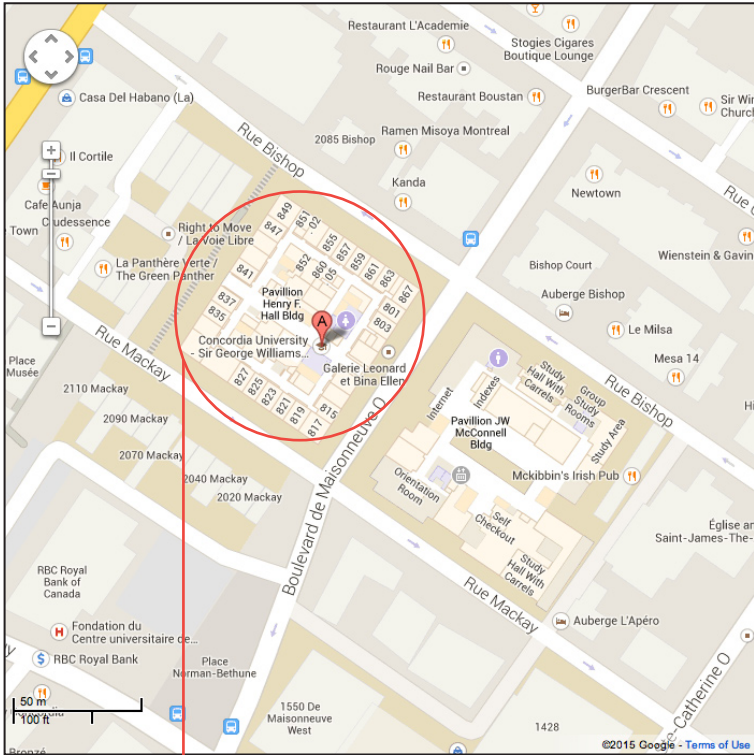
PROXIMITY MAP



HENRY F. HALL BUILDING
1455 BOULEVARD DE MAISONNEUVE OUEST

HOTEL CHATEAU VERSAILLES
1659 RUE SHERBROOKE OUEST

CAMPUS MAP



HENRY F. HALL BUILDING
1455 BOULEVARD DE MAISONNEUVE OUEST

To access the 7th Floor, enter the Hall Building either through the main entrance along de Maisonneuve, or the side entrance along Bishop and proceed to the elevators located behind the central staircase. Alternatively, you can use the central staircase to access the mezzanine level, and from there, proceed to the 7th floor via the escalators on your left.

Elevators, corridors, restrooms, and classrooms in the Hall Building are accessible to those with disabilities and/or mobility aids. If you have any questions regarding accessibility issues, please do not hesitate to contact one of the Symposium organizers.

TECHNICAL INFORMATION

AUDIO/VISUAL EQUIPMENT

All participants will have access to the same A/V set up in the conference room.

Unfortunately, requests for equipment changes cannot be accommodated.

Participants are respectfully asked to bring their presentation materials on portable USB drives wherever possible to allow for simpler turnovers between papers. The equipment available in the conference room is listed below.

- Presentation laptop with external speakers
- Data projector
- Projection screen
- Power bars and access to electrical outlets

PRINTING AND OFFICE SERVICES

With the exception of the Concordia Digital Store on the ground level of the Library Building, printing on campus is limited to those with Concordia identification cards. However, there are several print and copy shops around campus, including Copies Concordia on Boulevard de Maisonneuve Ouest, just across the street from the entrance of the Hall Building. Addresses and contact information for these services can be located in the “Helpful Services” section on page fourteen of this program.

SYMPOSIUM SCHEDULE

WEDNESDAY, MAY 13TH, 2015

2:30-2:45 – Check-in and set-up

2:45-3:00 – Welcoming Remarks

Charles Acland (Concordia University)

Eric Hoyt (University of Wisconsin-Madison)

3:00-3:30 – Arlight App

Eric Hoyt (University of Wisconsin-Madison)

Tony Tran (University of Wisconsin-Madison)

Fenwick McKelvey (Concordia University)

Charles Acland (Concordia University)

3:30-5:00 – Keynote: “Show me the History! Big Data Goes to the Movies”

Deb Verhoeven (Deakin University)

5:00-6:30 – Reception

THURSDAY, MAY 14TH, 2015

9:00-10:30 – Audio Tracking

“The Lost Critical History of Radio”

Michele Hilmes (University of Wisconsin-Madison)

“Historicist Audio Forensics”

Jason Camlot (Concordia University)

“Small Data: Report from the EASTT Group”

Lea Jacobs (University of Wisconsin-Madison)

Kaitlin Fyfe (University of Wisconsin-Madison)

Chair: Deb Verhoeven (Deakin University)

10:30-10:45 – Coffee Break

10:45-12:15 – Datasets and Historical Inquiry

“Station IDs: Making Local Markets Meaningful”

Kit Hughes (University of Wisconsin-Madison)

“Filmographic Databases and Query Comparison: A Methodology for Historical Research”

Derek Long (University of Wisconsin-Madison)

“The Media Ecology Project”

Mark Williams (Dartmouth College)

Chair: Eric Hoyt (University of Wisconsin-Madison)

12:15-1:30 – Lunch (Provided on-site)

1:30-3:00 – Film, Media, Archaeology

“Digital Humanities and Media History”

David Berry (University of Sussex)

“Digital Resources and the History of Non-Theatrical Cinema”

Greg Waller (Indiana University)

“Middle-Range Reading: Will Future Media Historians Have a Choice?”

Paul Moore (Ryerson University)

Sandra Gabriele (Concordia University)

Chair: Haidee Wasson (Concordia University)

3:00-3:15 – Coffee Break

3:15-4:45 – Mapping Flow and Figure

“Understanding the Global Circulation of Films Through Flow Mapping”

Laura Horak (Carleton University)

“Bachelor Reveries: Bachelorhood in Antebellum American Literature and Early American Film”

Lisa Spiro (Rice University)

“To the top, and back: Charting Pauline Garon’s Transnational Career”

Louis Pelletier (Université de Montréal & Concordia University)

Chair: Charlotte Fillmore-Handlon (Concordia University)

FRIDAY, MAY 15TH, 2015

9:00-10:30 – Digital Media Historiography

“Listicles, Vignettes, and Squibs: The Biographical Challenges of Mass History”

Ryan Cordell (Northeastern University)

“Formats and Film Studies: Using Digital Tools to Understand the Dynamics of Portable Cinema”

Haidee Wasson (Concordia University)

“The New New Cinema History: Data Ubiquity and Hyperabundance”

Robert Allen (University of North Carolina-Chapel Hill)

Chair: Michael E. Sinatra (Université de Montréal)

10:30-10:45 – Coffee Break

10:45-12:00 – Roundtable on Media History and Digital Methods

Chair and Animator: Paul Moore (Ryerson University)

Proceedings will take place in rooms H763 & H765

Hall Building (7th floor), Concordia University

1455 Boulevard de Maisonneuve Ouest, Montreal, Quebec



IN AND AROUND CONCORDIA & MONTREAL

In this section, you'll find helpful hints for arriving in, getting around, and experiencing Montreal and Concordia University. Should you have any further questions upon arrival, please contact one of the Symposium organizers.

ARRIVING IN MONTREAL

The Basics:

1 Canadian Dollar (CAD) is equal to approximately \$0.81 USD (as of April, 2015). Most common credit cards are widely accepted throughout Montreal, as are bank and debit cards, though some smaller businesses are occasionally cash only (*comptant seulement*). ATMs are widespread across the city, and can often be found in bank offices, convenience and corner stores (*dépanneur*), as well as in some restaurants and bars. Further tourist information can be found at tourisme-montreal.org

Transport from Pierre Elliot Trudeau Airport (YUL) to Montreal:

747 Express Bus:

The 747 provides quick, reliable transport between YUL and downtown Montreal twenty-four hours a day, seven days a week. The bus runs between the YUL arrivals hall and the Berri-UQAM metro hub/bus station in downtown Montreal, and makes nine stops along its route. Signage inside the bus indicates the hotels, services, and destinations clustered around each stop. To get to Concordia/Chateau Versailles from YUL, take the 747 to Station Lionel-Groulx. From there, take the metro (Green Line) towards Station Honoré-Beaugrand, and get off at Station Guy-Concordia, which is connected directly to Concordia University. To reach the hotel, exit to Rue Guy, and walk north for about five minutes before turning west (left) on Rue Sherbrooke and arriving at the hotel, just past Rue Saint-Mathieu.

Purchasing a pass for the 747 is simple. After collecting your bags in the arrivals hall, you will find several orange and blue vending machines marked STM (Société de Transport de Montréal). Here, you can purchase passes with cash, credit card, or bank card. A twenty-four hour pass costs \$10, a three-day pass \$18, and a weekly pass \$25.50. If you plan to pay the \$10 747 fare in cash, note that the on-board fare box only accepts change, and that larger Canadian coinage comes in \$1 and \$2 denominations (no pennies!). Passes allow you unlimited travel on public transportation throughout the city (bus and metro), including the ride from the airport. 747 buses are accessible, have plenty of space for luggage, and many are equipped with free WiFi. More information on the 747, as well as the wider metro and bus network, can be found at stm.info.

Taxis:

A trip from YUL to downtown Montreal will cost approximately \$40. Taxi drivers are usually tipped between ten and fifteen percent. Montreal taxis are not a uniform colour, but can be identified by the “TAXI” light on top of the vehicle. Inside, they should have a proof of registration and a photo ID installed in a place visible to the passenger. Average rates are \$3.45 at meter drop, \$1.70 per kilometer and \$0.63 per minute for any delay. Note that not all taxis accept credit cards, so be sure to confirm with the company when calling ahead or with the driver before departing.

Diamond Taxi: 514.274.6331

Atlas Taxi: 514.485.8585

Champlain Taxi: 514.273.2435

Taxi Co-op: 514.725.9885

Arrivals by Train at Gare Centrale/Central Station

VIA and AMTRAK trains arrive and depart from Gare Centrale, which connects to both Bonaventure and Lucien-L’Allier metro stations. If arriving by train, you can either follow Gare Centrale signage to the street and take a short taxi ride to Hotel Chateau Versailles/Concordia University, or follow the signage to Gare Lucien-L’Allier, exit to Rue Lucien-L’Allier, and walk to your destination. This will take approximately 15-17 minutes. After exiting to Rue Lucien-L’Allier, take a quick left on Rue Argyle, followed by a right on Rue Guy. Follow Guy through the SGW Campus of Concordia to Rue Sherbrooke Ouest. Turn left on Sherbrooke and proceed approximately one block west. Hotel Chateau Versailles should be on your right, just past Rue Saint-Mathieu.

Arrivals by Bus at Gare d’autocars/Bus Station:

Intercity busses arrive and depart from Gare d’autocars, which is connected to the Berri-UQAM metro/bus hub in downtown Montreal. To access the metro system (Green, Orange, and Yellow lines), follow the signage inside the station and purchase the appropriate pass from the orange and blue STM vending machines. There are also taxis waiting in front of the Station, along Rue Berri.

Parking at Concordia and Chateau Versailles:

If you plan to arrive by car, daily underground parking is available at Concordia University in the Library Building (LB) garage, located at 1436 Rue Mackay. The LB garage is open Monday through Friday, from 6:00 AM to midnight, and accepts payment in cash, MasterCard, and Visa. Rates are as follows:

\$3.50 half an hour

\$5.50 one hour

\$7.75 one hour & a half

\$10.75 Exit before 6 p.m.

\$6.50 Entry after 5 p.m.

\$13.00 Daily maximum

\$20 for a lost ticket

Daily parking is also available under the Faubourg Tower. The Faubourg garage is located at 1250 Rue Guy, is open Monday through Friday, from 6:00 AM to midnight, and accepts payment in cash, MasterCard, and Visa. Rates are as follows:

\$3.50 half an hour

\$9.00 Early bird rate. Entry before 8:30 a.m.

\$6.50 Entry after 4 p.m.

\$13.00 Daily maximum

\$20 for a lost ticket

Parking at Hotel Chateau Versailles is limited to either metered street parking or valet parking with in-and-out privileges at a rate of \$27 per day.

GETTING AROUND MONTREAL

Walking:

By mid-May, temperatures in Montreal will have more or less stabilized around spring-like conditions, ideal for experiencing the city's many sights and attractions on foot. However, do come prepared with a mid-weight jacket, a scarf, and light gloves just in case temperatures slip. Spring rains and winds can also be quite severe, so raincoats and umbrellas are recommended.

Both Concordia University and Hotel Chateau Versailles are well-situated for sightseeing. The Hall Building is located just one block from the city's main commercial district, Rue Sainte-Catherine, which boasts a wide variety of shops, restaurants, and bars. Followed west, Sainte-Catherine will lead you through the Quartier des Spectacles – where you can experience the Musée d'Art Contemporain (185 Rue Sainte-Catherine Ouest), the Vox Centre de l'image Contemporain (2 Rue Sainte-Catherine Est, #401), as well the smaller gallery spaces of the Belgo (372 Sainte-Catherine Ouest) – Chinatown (turn right on either Boulevard Saint-Laurent or Rue Saint-Urbain), and eventually the Gay Village/Village Gai.

Also a short walk from the Concordia/Chateau Versailles area, along Rue Sherbrooke Ouest, you will find both the Musée des Beaux Arts (1380 Rue Sherbrooke Ouest) and the McCord Museum of Canadian History (690 Rue Sherbrooke Ouest). Situated between the two is the campus of McGill University, which features lush grounds and common areas connected by footpath to Parc du Mont-Royal. Those looking for a bit of exercise will enjoy exploring the many walking and running trails that snake through this beautiful urban park, which features several lakes, recreation areas, and lookouts that afford breathtaking views of the city.

The particularly intrepid might also enjoy cutting through the park toward the Plateau neighbourhood, known for its vibrant and trendy restaurant, shopping, and bar scene. Other areas of Montreal, such as the Old Port/Vieux Port, are accessible by the city's metro and bus network.

Metro and Bus:

Montreal has four metro lines (Green, Orange, Blue, and Yellow) that run daily from roughly 5:00 AM until 1:00 AM, though first and last ride will vary from station to station. Concordia University is connected directly to the Green Line by Station Guy-Concordia, accessible either from Rue Guy, or through the EV Building, which is connected to both the Library Building and the Hall Building by an underground passageway.

A single ticket for both the metro and the bus costs \$3.25, transfer included. As well, unlimited daily (\$10), weekend (\$13), and three-day (\$18) passes can be purchased from STM vending machines. Weekly passes (\$25.50) are available with an OPUS card, a reloadable fare card that can be purchased for \$6 from ticket booth attendants in metro stations. More information on fares, maps, and schedules can be found at stm.info. The STM also has a mobile app that provides route and schedule information on the go.

The metro system can quickly connect you to many of Montreal's attractions and neighbourhoods. The Green Line links Station Guy-Concordia with McGill University (Station McGill), Quartier des Spectacles (Station Place des Arts), the Berri-UQAM transit hub, the Gay Village/Village Gai (Stations Beaudry and Papineau), the Botanical Gardens, and the Olympic Stadium (both Station Pie-IX).

The Orange Line, accessible from Station Lucien L'Allier, will connect you with the Old Port/Vieux Port (exit at Station Champ-de-Mars), Chinatown, Berri-UQAM, the Plateau/Mile End (exit at Stations Sherbrooke, Mont-Royal, or Laurier), as well as Little Italy, Petite Patrie, and Marché Jean Talon (exit at Stations Beaubien or Jean Talon). Unfortunately, only a small handful of metro stations are equipped with elevators, and many require that patrons use flights of stairs. Consult route maps either in the station or at stm.info for complete accessibility information.

Buses in downtown Montreal run frequently (often every 5-10 minutes) and have excellent coverage. Outside of peak hours, service is reduced, though a city-wide system of night buses, placed along major routes, helps with late-night travel. Most bus stops are equipped with route maps and schedules, and if you download the STM app, you can access this information on the go. Many STM buses, though not all, are equipped with boarding ramps and designated spaces for wheelchairs and other mobility devices.

A note on language: Though in downtown Montreal you will find that you are happily served and assisted in English, be aware that some street signage, and most metro signage, is exclusively in French. Very clear and easy-to-understand route maps, however, make navigation extremely simple.

FOOD AND DRINK

Montreal is known for its outstanding culinary scene. Below is information on where to go when you need a cup of coffee, a quick meal, or a drink.

Coffee & Tea (Near Concordia):

Café Myriade
1432 Rue Mackay
514.939.1717

Second Cup
1602 Rue Sainte-Catherine Ouest
514.939.3237

Hive Café Solidarity Co-operative
Mezzanine Level, Hall Building
1455 Boulevard de Maisonneuve

Starbucks Café
2000 Rue Guy or
1370 Rue Sainte-Catherine Ouest
514.678.3223 or 514.904.2078

Java U Café
1455 Rue Guy
514.932.5288

Tim Horton's
Library Building Atrium,
1400 Boulevard de Maisonneuve or
Inside Station Guy-Concordia

Kafein Café | Bar
1429 Rue Bishop
514.904.6969

Coffee & Tea (Further Afield):

Café Replika
252 Rue Rachel Est
514.903.4384
(Plateau)

Kitsuné Espresso Bar
19 Rue Prince Arthur Ouest
514.507.2055
(Lower Plateau)

De Farine et D'eau Fraiche
1701 Rue Amherst
514.522.2777
(Gay Village)

Le Cagibi
5490 Boulevard Saint-Laurent
514.509.1199
(Plateau)

Café Saint-Henri
3632 Rue Notre-Dame Ouest
514.507.9696
(St-Henri)

Moustache Café
35 Rue Beaubien Est
514.999.0685
(Little Italy/Petite Patrie)

Lunch & Dinner (Near Concordia):

Boustan
2020 Rue Crescent
514.843.3576
Casual Lebanese

Burritoville
2055 Rue Bishop
514.286.2776
Vegetarian Mexican

Crudessence
2157 Rue Mackay
514.664.5188
Vegan & Vegetarian

Fiddler's Green
1224 Rue Bishop
514.861.7777
Casual Pub

Gado Gado
1242 Rue Mackay
514.419.7739
Indonesian

Il Panino Mediterraneo
1435 Rue Guy
514.303-1103
Grilled Sandwiches & Salads

Mesa 14
1425 Rue Bishop
514.284.0344
Mexican

Moose Bawr
1817 Rue Sainte-Catherine Ouest
514.846.6673
Contemporary Canadian

Lunch & Dinner (Further Afield)

Aux Vivres
4631 Boulevard Saint-Laurent
514.842.3479
Vegan & Vegetarian
(Plateau)

Arepera de Plateau
4050 Rue de Buillion
514.508.7267
Venezuelan
(Plateau)

Panthère Verte
2153 Rue Mackay
514.903.4744
Vegan & Vegetarian

Qing Hua Dumpling
1676 Avenue Lincoln
514.903.9877
Chinese Dumplings

Restaurant Cuisine Bangkok
1616 Rue Sainte-Catherine Ouest
514.935.2178
Thai

Restaurant Devi
1450 Rue Crescent
514.286.0303
Indian & Vegetarian

Restaurant Kazu
1862 Rue Sainte-Catherine Ouest
514.937.2333
Japanese

Thai Express
1570 Boulevard de Maisonneuve Ouest
514.937.6280
Casual Thai

Bistro Japonais Furusato
2137 Rue De Bleury
514.849.3438
Sushi
(Quartier des Spectacles)

Dolcetto & Co.
151 Rue Saint-Paul Ouest
514.419.8522
Italian/Small Plates
(Old Port/Vieux Port)

Gema Pizzeria
6827 Rue Saint-Dominique
514.419.4448
Pizza
(Little Italy/Petite Patrie)

La Banquise
994 Rue Rachel
514.525.2415
Poutine
(Plateau)

Lola Rosa
545 Rue Milton
514.287.9337
Vegetarian Comfort Food
(McGill)

Nouveau Palais
281 Rue Bernard Ouest
514.273.1180
Contemporary Diner
(Mile End)

Cocktails & Breweries (Near Concordia):

Brutopia
1219 Rue Crescent
514.393.9277
Microbrewery

Grumpy's
1242 Rue Bishop
514.866.9010
Casual Pub

Les Trois Brasseurs
732 Rue Sainte-Catherine Ouest
514.788.6333
Microbrewery

Réservoir
9 Avenue Duluth Est
514.849.7779
Contemporary Canadian/Pub
(Plateau)

St-Viateur Bagel & Café Mont-Royal
1127 Mont-Royal Est
514.528.6361
Montreal Bagels & Coffee
(Plateau)

Schwartz's Deli
3895 Boulevard Saint-Laurent
514.842.4813
Montreal Smoked Meat
(Plateau)

McKibbin's
1426 Rue Bishop
514.288.1580
Irish Pub

N sur Mackay
1244 Mackay
514.938.1244
Craft Cocktails

Taverne Square Dominion
1243 Rue Metcalfe
514.564.5056
Traditional

Cocktails & Breweries (Further Afield):

Bar Sans Nom
5295 Avenue du Parc
514.508.5295
Cocktail Lounge
(Mile End)

Notre Dame Des Quilles
32 Rue Beaubien Est
514.507.1313
Casual Lounge/LGBT
(Little Italy/Petite Patrie)

Dieu du Ciel!
29 Avenue Laurier Ouest
514.490.9555
Microbrewery
(Plateau/Mile End)

Philémon
111 Rue Saint-Paul Ouest
514.289.3777
Cocktail Lounge
(Old Port/Vieux Port)

Grenade
1603 Rue Ontario Est
514.525.4251
Cocktail Lounge
(Gay Village/Parc Lafontaine)

Sparrow
5322 Boulevard Saint-Laurent
514.507.1642
Gastropub
(Plateau)

Le Cheval Blanc
890 Rue Ontario Est
514.522.0211
Microbrewery
(Quartier Latin)

Terrasse Nelligan
106 Rue Saint-Paul Ouest
514.788.4021
Cocktail Lounge & Terrasse
(Old Port/Vieux Port)

HELPFUL SERVICES:

Copies Concordia
1520 Boulevard de Maisonneuve Ouest
514.931.3063

Pharmacie Jean Coutu
1675 Rue Sainte-Catherine Ouest
514.4221

Marché PA
1420 Rue du Fort
514.932.0922
Groceries

Royal Bank of Canada
2157 Rue Guy
514.874.8966
US Cash ATM Available

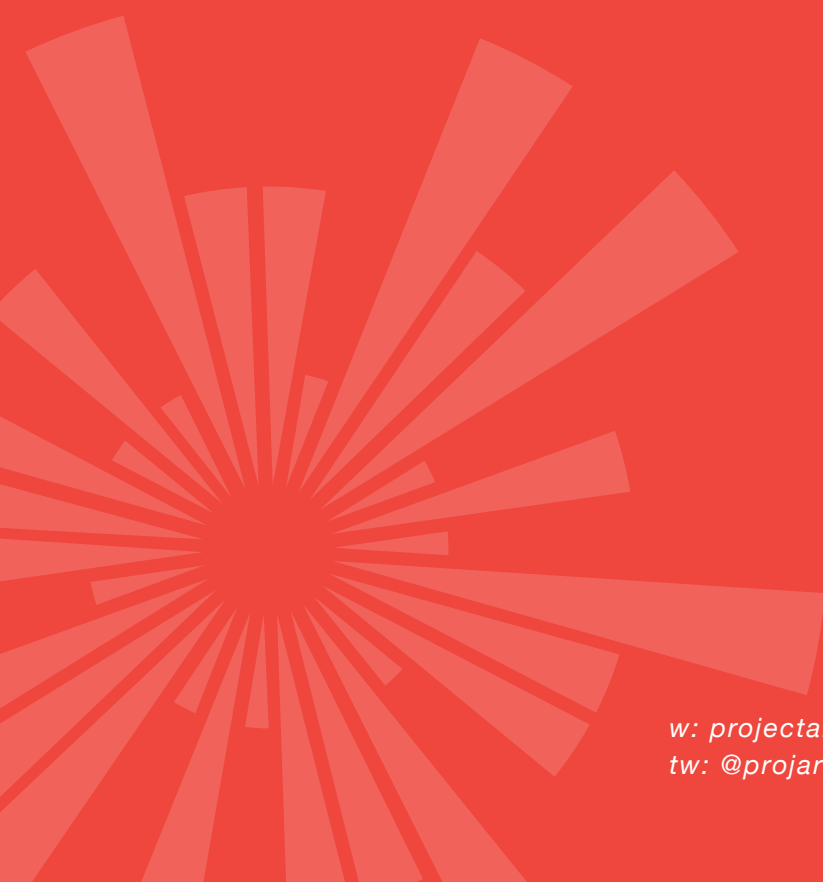
Pharmaprix & Canada Post
1500 Rue Sainte-Catherine Ouest
514.933.4221
Pharmacy

SAQ Faubourge Sainte-Catherine
1618 Rue Sainte-Catherine Ouest
514.935.2716
Beer, Wine & Liquor

NOTES



A R C L I G H T



w: projectarclight.org
tw: @projarclight